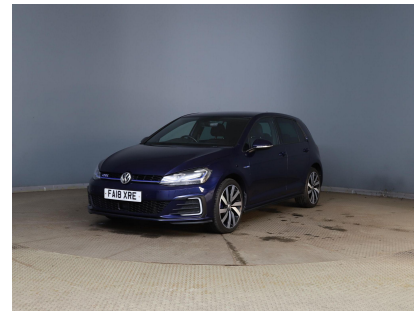


**2018 USED 1.4 TSI 8.7kWh GTE Advance DSG Euro 6 (s/s) 5dr**



color:

Mileage:

**19192**

Transmission:

**Automatic**

Price:

**£17,558.00**

Registration:

**FA18XRE**

Fuel:

**Petrol Plug-in Hybrid**

With only one previous owner and very low mileage for its year, this 2018 Volkswagen Golf GTE Advance is a superb example of a well-cared-for vehicle. Featuring a 1.4L Petrol Plug-in Hybrid engine and meeting Euro 6 emission standards, this Golf combines performance with environmental consciousness. The GTE Advance trim adds a touch of sophistication and enhances the driving experience. Equipped with a range of features, this Golf prioritises comfort and convenience. Climate Control ensures a pleasant cabin environment, while the Winter Pack, including heated seats, provides extra warmth during colder months. The Dusk Sensor and automatic driving lights offer enhanced visibility and safety. Adaptive Cruise Control makes long journeys more relaxing. The Composition Media System, complete with Bluetooth connectivity, keeps you entertained and connected on the move. The acceleration is particularly impressive, reaching 0-60mph in just 7.3 seconds, demonstrating its sporty credentials.

MPG Average

156.9

Engine Size

1.4l

Max Power(BHP)

201

Max Torque(NM)

349

Max Speed(MPH)

138

0-60

7.3

Insurance Group

26

Other Features and Key Information

WINTER PACK, ACTIVE INFO DASH

| Representative Examples – PCP subject to an annual mileage, excess mileage fees may apply. |            |           |            |            |       |       |             |             |         |         |             |         |  |
|--|------------|-----------|------------|------------|-------|-------|-------------|-------------|---------|---------|-------------|---------|--|
|  | CP         | Deposit   | TAOC       | TAP        | AF    | OTPF  | FR          | R-APR       | DOA     | IP      | MP          | FP      |  |
| HP   | £17,558.00 | £1,755.00 | £15,803.00 | £20,803.84 | £0.00 | £1.00 | 5.13 % P.A. | £9.90 % APR | 48 mths | £396.83 | 396.83 X 46 | £397.83 |  |